



@rawpixel

SEMINAR OFFER

Hôtel de l'Etrier ****

Rue du Pas-de-l'Ours 31, 3963 Crans-Montana, Valais, Suisse

hotel.ेत्रier@bluewin.ch • www.hoteletrier.ch

+41 27 485 44 00



INDEX

01. Our hotel
02. Our conference rooms
03. Coffee break
04. Vitality coffee break
05. Afternoon snack
06. Restaurants (1/2)
07. Restaurants (2/2)
08. Team Building winter
09. Team Building summer
10. Nursery
11. Spa l'Alpage
12. How to join us
13. They have placed their trust in us



OUR HOTEL



ROOMS

- 60 rooms including 7 suites and junior suites
- Free and unlimited wifi
- Luggage storage
- Ski room



WELLNESS

- Spa "L'Alpage"
- Heated outdoor/indoor pool
- Sauna & hammam
- Garden (summer)
- Fitness



PARKING LOT

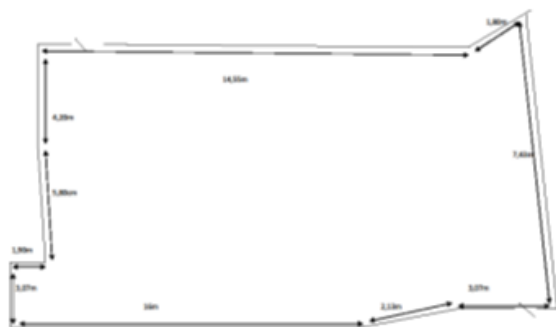
- Outdoor parking lot
- Transfer organisation (taxi, helicopter, bus, minibus)

OUR CONFERENCE ROOMS

CONFERENCE ROOM "PLEIN SUD"

This conference room has a large bay window that gives it plenty of light. The view on the Swiss Alps is stunning and the atmosphere is perfectly adapted to work.

Surface	Theatre style	School style	U style
200 m2	100	60	40



CONFERENCE ROOM "CHALET"

La salle "Chalet" est authentique et chaleureuse. Sa décoration boisée et son balcon créent une ambiance "cosy" parfaite pour les petits comités.

Surface	Theatre style	School style	U style
80 m2	50	30	25

EQUIPMENT

- Free wifi access
- Screen
- Flipchart
- Desk pad, pencil, water

We rent: projector, beamer, audiovisual material

We rent the conference rooms for free when the group is hosted in our hotel.



COFFEE BREAK

Coffee, tea, hot chocolate, hot and cold milk
Fruit juice (bottle: orange & grapefruit)
10.- per person

Fresh juice
Adding 5.- per person

Selection of mini pastry and fresh fruits
Adding 5.- per person

Regional cured meat and cheese
Adding 10.- per person

VITALITY COFFEE BREAK

Coffee, tea, hot chocolate, hot and cold milk

Fresh detox juice

Selection of mini pastry

Fresh fruit

Fruit salad

Müesli

Yaourt

25.- per person





AFTERNOON SNACK

Coffee, tea, hot chocolate, hot and cold milk
Fruit juice (bottle: orange and grapefruit)

Selection of cakes:

Muffins, brownies, cookies, etc.

15.- per person

Adding a selection of mini sandwiches, croque monsieur,
cheese ramequin, etc.

10.- per person

RESTAURANTS

Our chef prepares business lunches (menu and buffet) and 3-meal menus for dinner. We organise aperitif for small and large groups, as well as traditional evenings with cheese fondue, meat fondue or raclette.

Restaurant l'Etrier

Up to 200 people

Restaurant le Fer à Cheval

Traditional cuisine

Up to 40 people

Restaurant Gerber (Montana)

Brasserie, pizzeria, creperie

Up to 120 people



RESTAURANTS

L'Ours  

Gastronomic restaurant

Up to 100 people

Le Bistrot des Ours

Refined mediterranean restaurant

Up to 60 people

La Cabane des Violettes (Montana)

Quality traditional cuisine

Up to 100 people

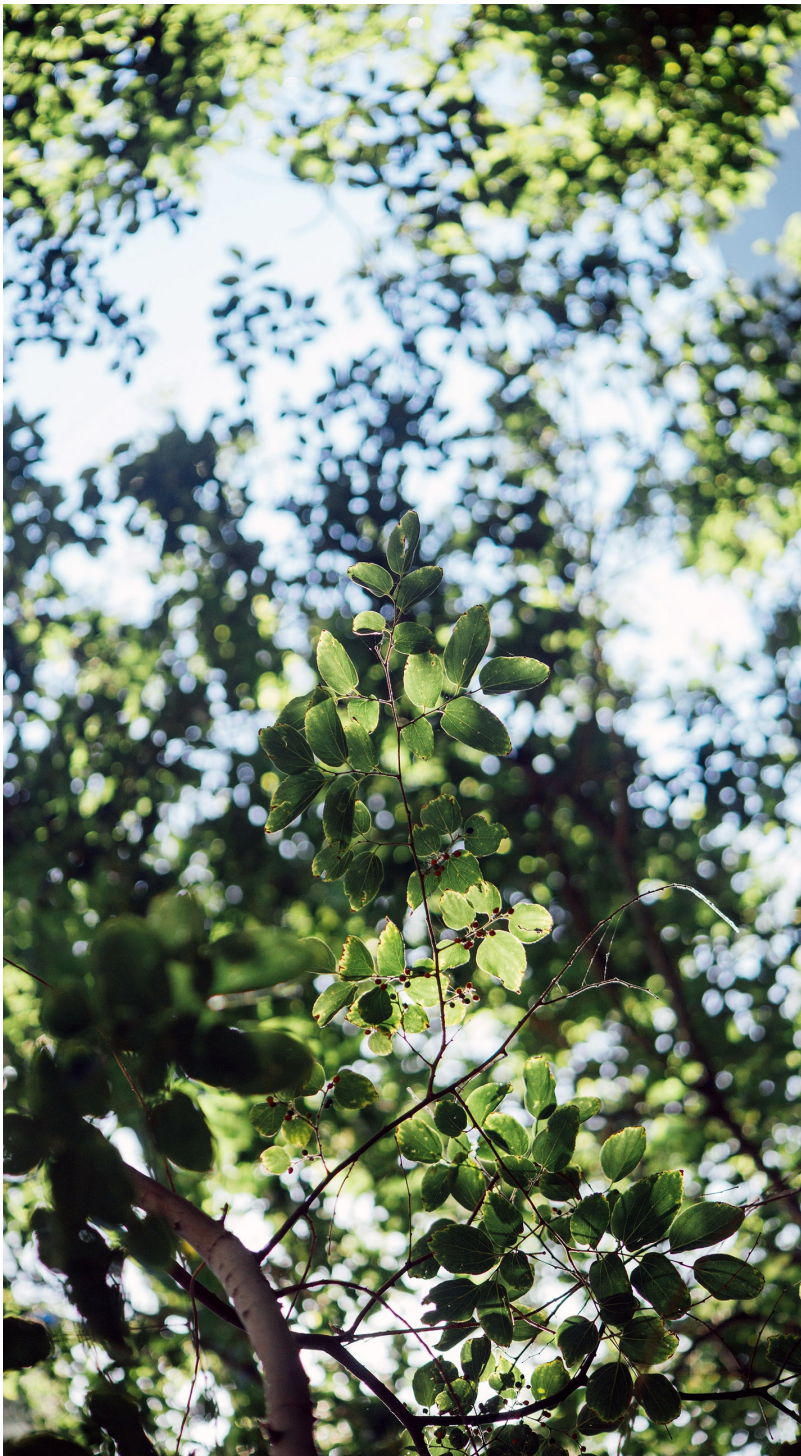


TEAM BUILDING WINTER

- 140 km of ski slopes in Crans-Montana
- Sledging, skating, cross-country skiing
- Slalom competition
- Hiking (snowshoes & ski touring)
- Sleigh dog adventure
- Curling
- Paragliding

You can count on us to guide you on the slopes of Crans-Montana, either skiing or hiking. We help you with equipment rental and ski passes too.





TEAM-BUILDING SUMMER

- 9 and 18-hole golf course
- 177 km of slopes for VTT and kick scooter
- Hiking in the mountains, in the ski resort or in the vineyards.
- Indoor sports (tennis, bowling, climbing)
- Vineyard discovery and wine tasting
- Private yoga class in our garden
- Private African dance course
- Beach Club

We would be pleased to guide you during your activities and share our knowledge about the offer of the ski resort.

SPA L'ALPAGE

Add a sparkle to your seminar with an exclusive offer!

Work hard, relax hard.

Our team organises massages, facial and body skincare for your team.

Special massages and skincare are available for pregnant women and children!

We work with HORMETA and PHYTOMER for high quality products.



HOW TO JOIN US

By car

From the main highway (A9) take the exist "Sierre" and follow the direction to "Crans-Montana" for about 15km.

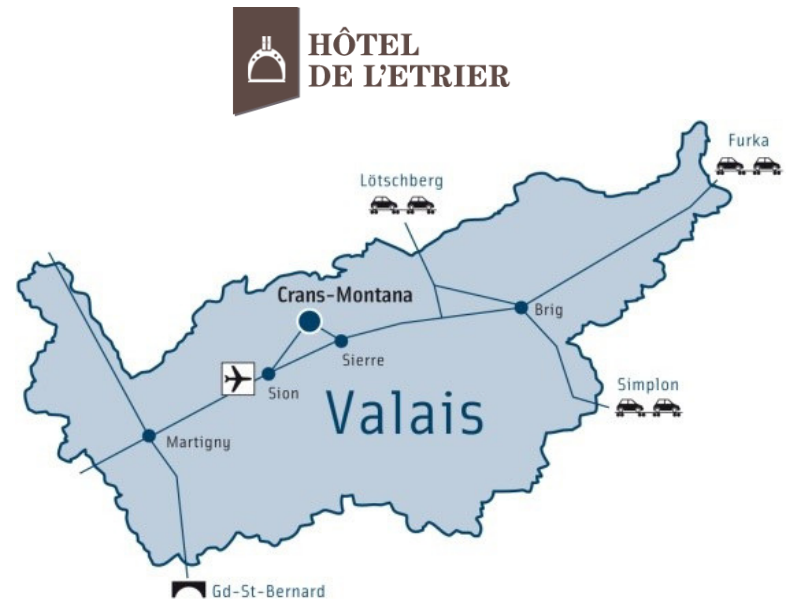
By train

The Swiss rail network takes you to Sion, where a direct bus reaches Crans-Montana in 45 minutes. You can choose to stop in Sierre and take the funicular that takes 20 minutes to arrive in Montana. www.cff.ch

By plane

The nearest airports are Sion (30 km), Geneva (180km), Milano Malpensa (220 km), Basel (270 km) and Zürich (300 km)

We organise transfers by taxi, bus, minibus and helicopter on demand.



THEY HAVE PLACED THEIR TRUST IN US

